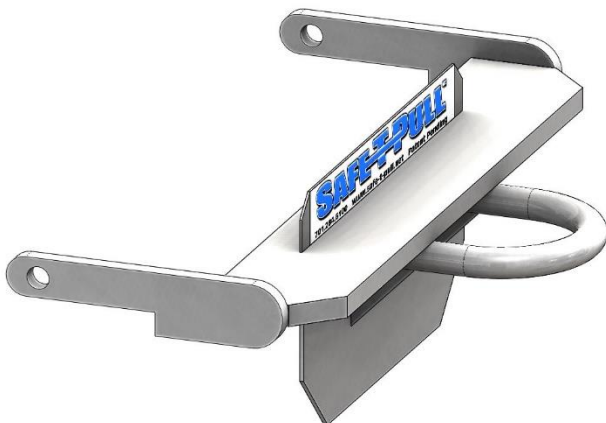
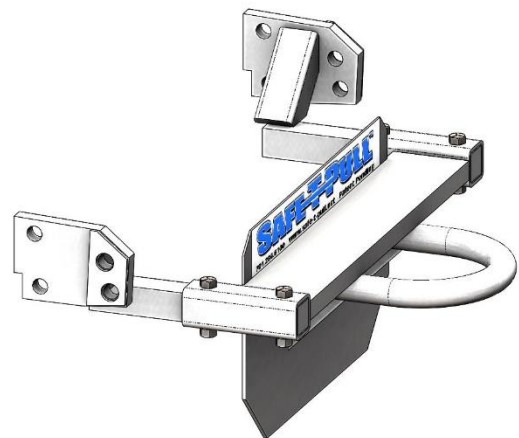
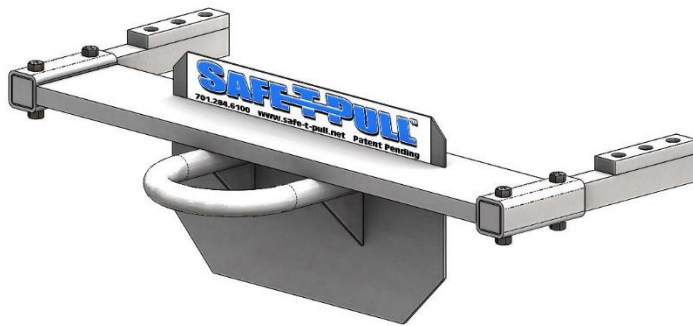


SAFET-PULL™

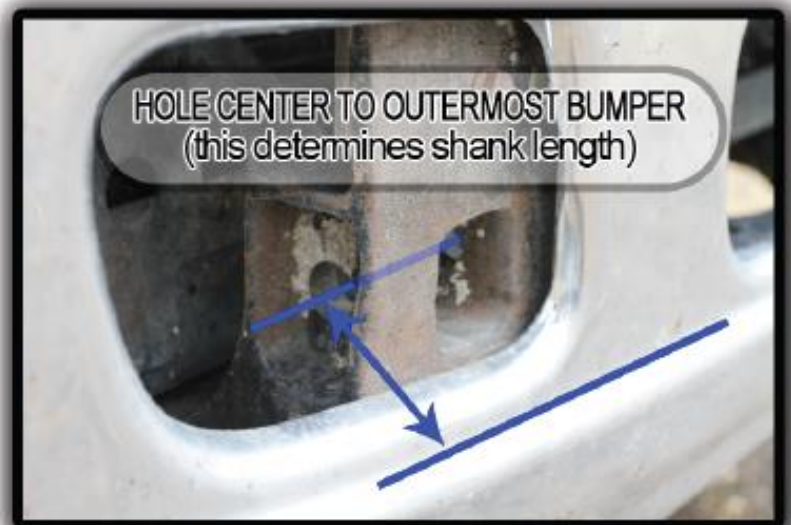
Quick Guide to Measuring Trucks





Step 1: Measure center to center across the square receivers to determine the frame width & bar length needed.

Step 2: Measure from the center of the hole that holds your tow hook in to the outermost bumper to determine the length needed to clear.



Freightliner

Typical bar widths - 32-1/4", 44-1/4", 46-1/4", 49-1/2"

Typical shank length - above measurements have one standard length

International

Typical bar widths - 31-1/2", 32", 36-5/8", 37-1/8", 37-1/2", 38-1/4"

Typical shank length - above measurements have one standard length

Kenworth (same frame as Peterbilt)

Typical bar widths - 23-5/8", 24-5/8", 34-1/8", 37-1/8", 39-1/2", 39-3/4"

Typical shank length - 3-1/4", 5-1/2", 7-3/4", 9-1/2" (depends on bumper type)

Peterbilt (same frame as Kenworth)

Typical bar widths - 23-5/8", 24-5/8", 34-1/8", 37-1/8", 39-1/2", 39-3/4"

Typical shank length - 3-1/4", 5-1/2", 7-3/4", 9-1/2" (depends on bumper type)

Sterling

Typical bar widths - 36-1/2", one shank measurement, 1-1/4" shanks

Volvo

Typical bar widths - 39-3/4", 43"

Typical shank length - 6" or 12" if hydraulic pump mounted in front

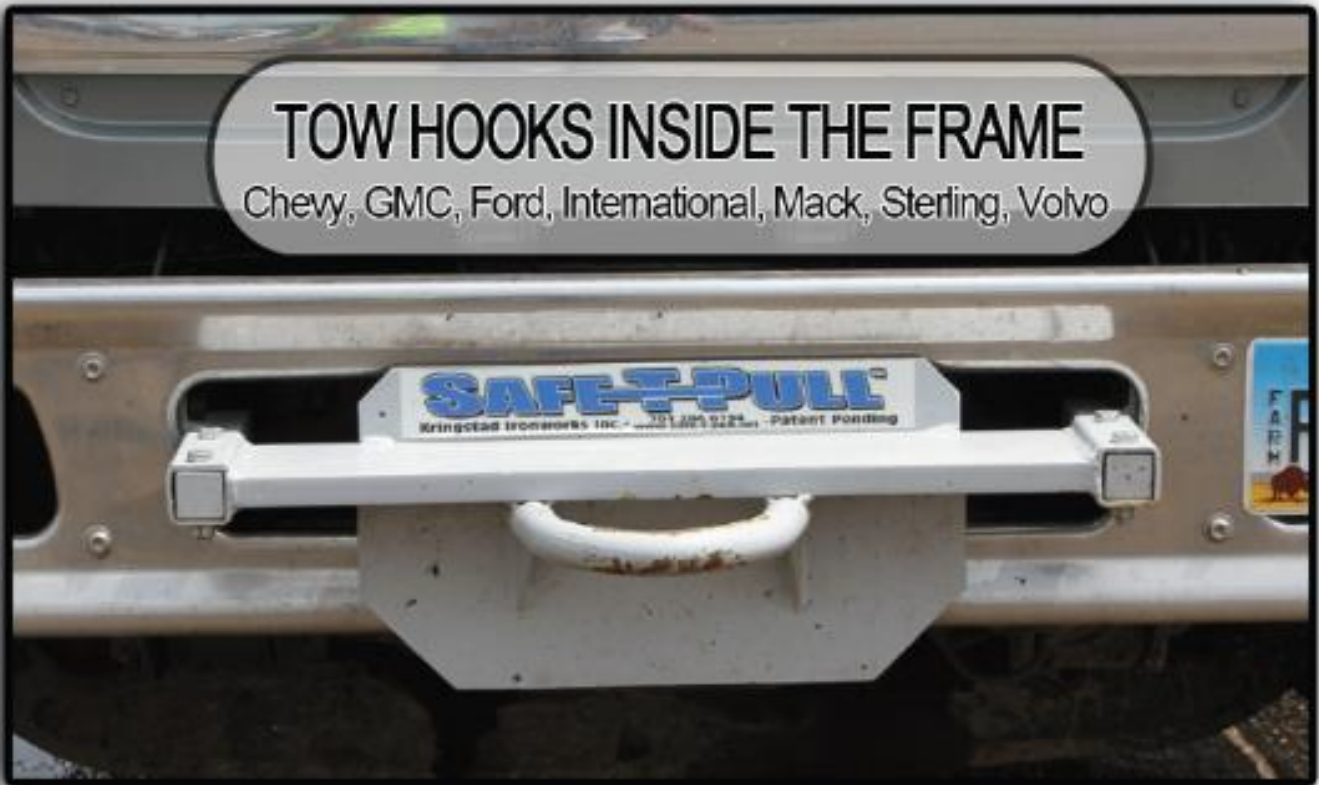
Western Star (have same frame as Freightliner)

Typical bar widths - 44-1/4" 46-1/4"

Typical shank length - above measurements have one standard length

TOW HOOKS INSIDE THE FRAME

Chevy, GMC, Ford, International, Mack, Sterling, Volvo



Measure inside of the frame across to the other frame. These tow hooks are typically a 4 bolt hook in square or rectangle pattern.

Chevy & GMC

Typical inside frame widths - 29", 32-1/2"

Typical shank length - above measurements have one standard length

Ford

Typical inside frame widths - 33"

Typical shank length - above measurements have one standard length

International

Typical inside frame widths - 33-1/2"

Typical shank length - above measurements have one standard length

Check to see if bolt pattern is square pattern or rectangle, 2 options available!

Mack

Typical inside frame widths - 39-1/4"

Typical shank length - above measurements have one standard length

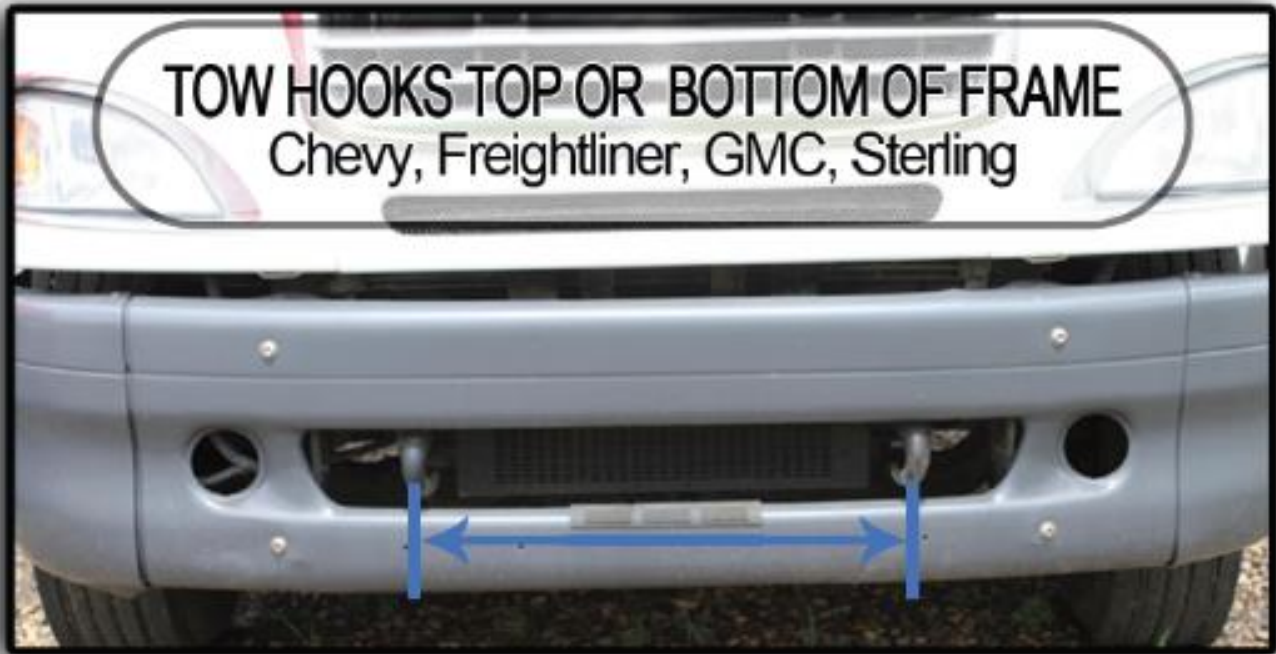
Sterling

Typical inside frame widths - 33", 34-1/8"

Typical shank length - above measurements have one standard length

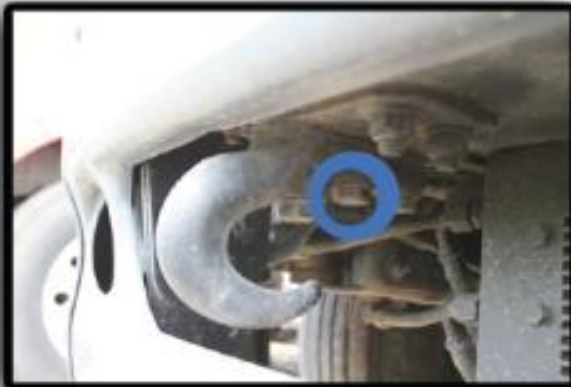
Volvo

Typical inside frame widths - 33" to 34" measurements needed

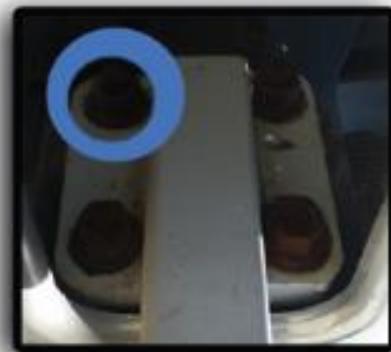


Measure tow hook bolts from one frame rail across to the other tow hook

Note: If bolts are in a line, always measure the 2nd bolt in from the bumper



Note: If bolts are in a square pattern, measure the innermost bolts



Chevy & GMC

Typical center to center widths - 31-3/8", 36"

Typical shank length - above measurements have one standard length

Freightliner

Typical center to center widths - 30-3/4", 37"

Typical shank length - above measurements have one standard length

International

Typical inside frame widths - 33-1/2"

Typical shank length - above measurements have one standard length

Sterling

Typical center to center widths - 34-1/2"

Typical shank length - above measurements have one standard length

TOW HOOKS OUTSIDE THE FRAME

International - 4 bolt tow hooks



Measure outside of the frame across to the other frame. These tow hooks are typically a 4 bolt hook with a square pattern.

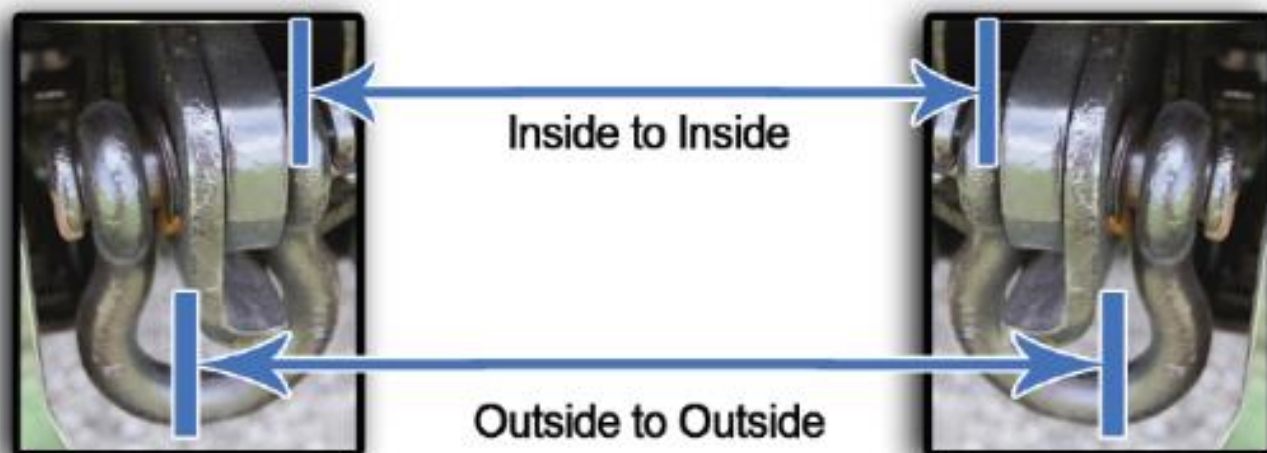
International

Typical frame widths - 34-1/4", 34-5/8", 35-5/8"

Typical shank length - above measurements have one standard length



Measure inside the frame rail on one side to the inside of the opposite frame rail
Measure from outside of one frame rail to the outside of the other frame rail



Mack

MK-001 - Inside 31-7/8" - Outside 35-1/4"

MK-002 - Inside 39-1/4" - Outside 43-3/8"