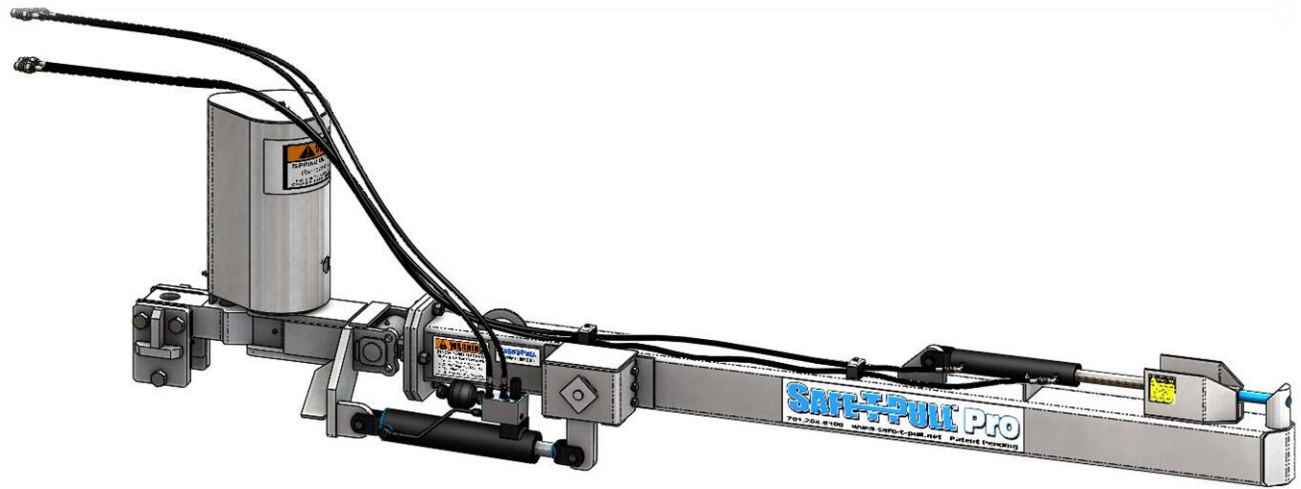


# **SAFETY-PULL™ Pro**

## *User Maintenance Guide*



***Safe-T-Pull Inc.***

## Pre-Operation Maintenance

Before every operation of your Safe-T-Pull PRO, an inspection and pre-operation maintenance should be done to ensure all components are in operating order:

1. Check hydraulic fluid in the pulling vehicle to make sure levels are adequate.
2. Check hydraulic hoses for cuts, cracks, pressure bubbles, or other damage.  
*NOTE:* Steel braiding should NEVER be visible
3. Check hydraulic fittings for dents, cuts, leaks, or other signs of damage.
4. Check to make sure all hydraulic hoses are securely fastened to their correct fittings.
5. Check to make sure all hydraulic cylinder pins are secured with correctly installed hitch clips and/or bolts.
6. Grease the four grease zerks.
7. Check to be sure no pins are worn.

**NOTE:** If your Safe-T-Pull PRO is being used continuously, pre-operation maintenance should be done before EVERY shift change or EVERY 12 hours, whichever comes first.

## Product Maintenance

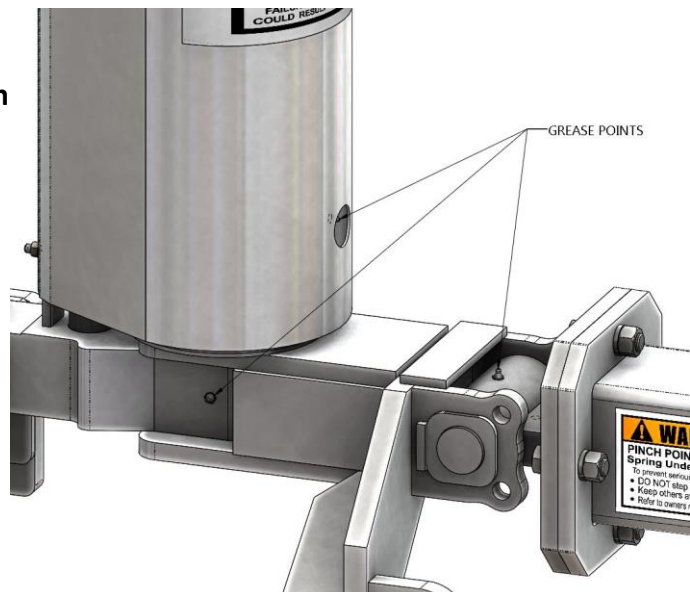
For proper operation ensure the following equipment is in proper operating condition.

### Hydraulic system

- Check hydraulic fluid in the pulling vehicle to make sure levels are adequate.
- Check hydraulic hoses for cuts, cracks, pressure bubbles, or other damage.  
**CAUTION:** Steel braiding should NEVER be visible
- Check hydraulic fittings for dents, cuts, leaks, or other signs of damage.
- Check to make sure all hydraulic hoses are securely fastened to their correct fittings.
- Check to make sure all hydraulic cylinders pins are secured with correctly installed hitch clips and/or bolts.

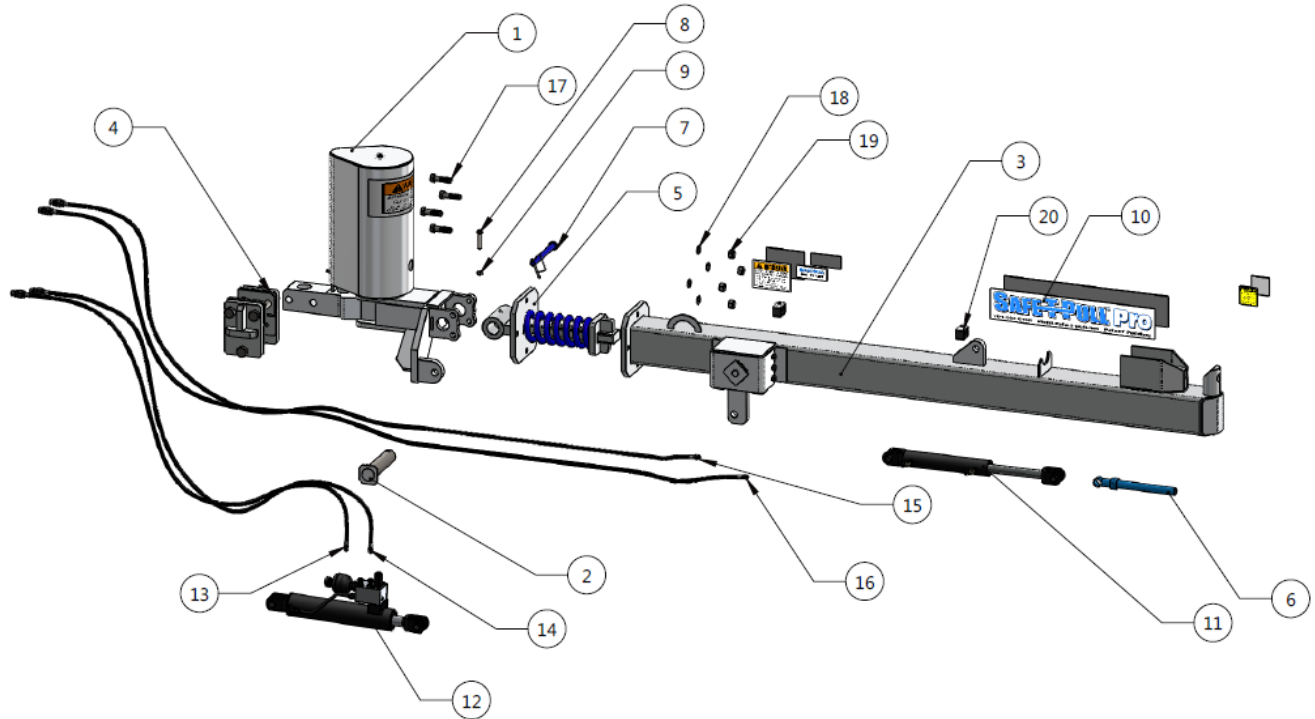
### Grease

- Grease the three grease points as shown



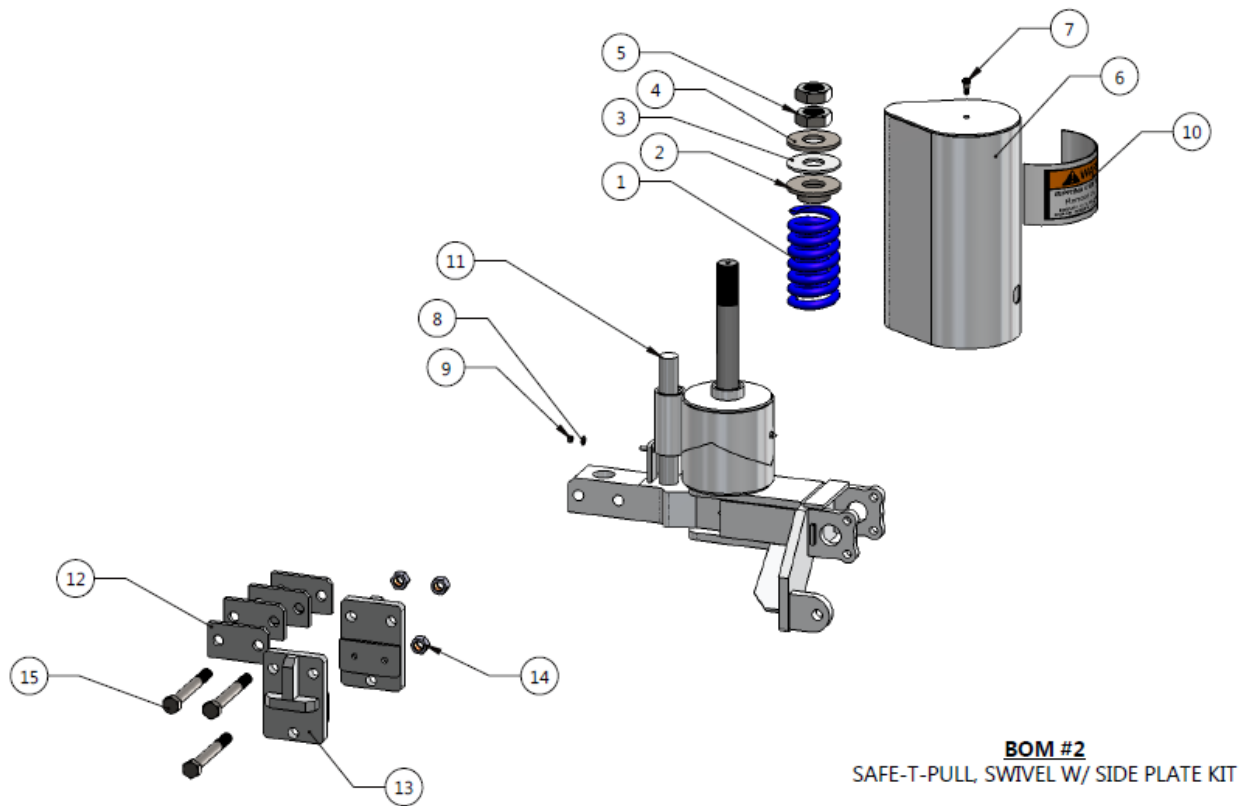
## Replacement Parts

Contact your authorized Safe-T-Pull Dealer or manufacturer representative to order replacement parts.



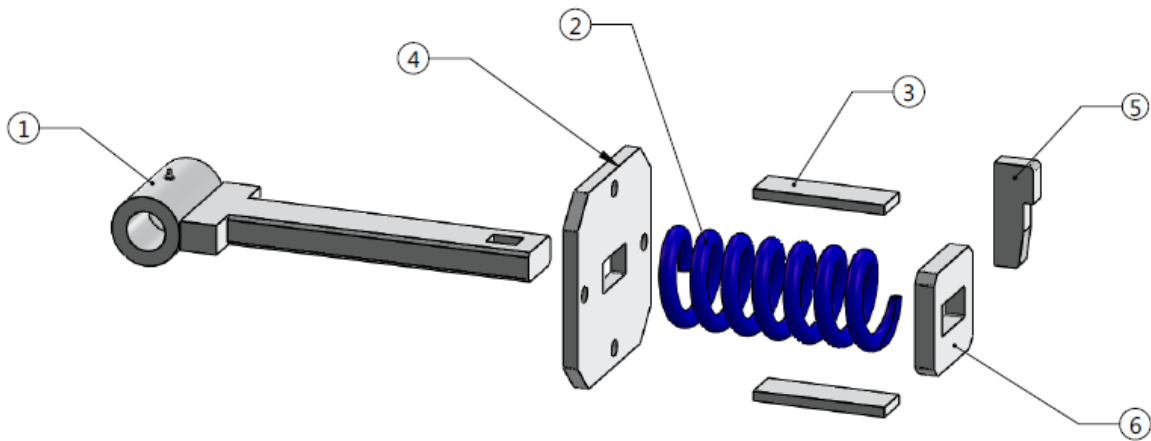
### BOM #1 SAFE-T-PULL, PRO PULLER

ITEM NO.	PART NUMBER	DESCRIPTION	QTY.
1	FP-15005	STP PRO PULLER, SWIVEL TONGUE SUB WELDMENT	1
2	FP-012	STP PRO PULLER, PIVOT PIN WELDMENT	1
3	FP-028	STP PRO PULLER, TUBE WELDMENT	1
4	FP-031	STP PRO PULLER, DRAW BAR SIDE PLATE FULL ASSEMBLY	1
5	FP-15019	STP PRO PULLER, SPRING TONGUE ASSEMBLY	1
6	CP-003	STP COMMON PULLER, LOCKING PIN WELDMENT	1
7	CP-006	STP PRO PULLER, MANUAL LOCKING PIN W/CLIP	1
8	XP-194	HBOLT 0.5000-13x2.5x1.25	1
9	XP-266	NYLOCNUT 0.50-13	1
10	XP-186	STP PRO PULLER, STICKER KIT	1
11	XP-002	STP COMMON PULLER, HITCH PIN LOCKING CYLINDER	1
12	XP-004	STP PRO PULLER, SMART LIFT CYLINDER	1
13	XP-179	STP COMMON HYDRAULIC HOSE ASSEMBLY - 9' LONG (W/ENDS)	1
14	XP-179	STP COMMON HYDRAULIC HOSE ASSEMBLY - 9' LONG (W/ENDS)	1
15	XP-182	STP COMMON HYDRAULIC HOSE ASSEMBLY - 13' LONG (W/ENDS)	1
16	XP-183	STP COMMON HYDRAULIC HOSE ASSEMBLY - 14' LONG (W/ENDS)	1
17	XP-100	HBOLT 0.7500-10x2.75x1.75	4
18	XP-101	LW 0.75	4
19	XP-102	HNUT 0.7500-10	4
20	XP-003	HOSE GUIDE	2



**BOM #2**  
SAFE-T-PULL, SWIVEL W/ SIDE PLATE KIT

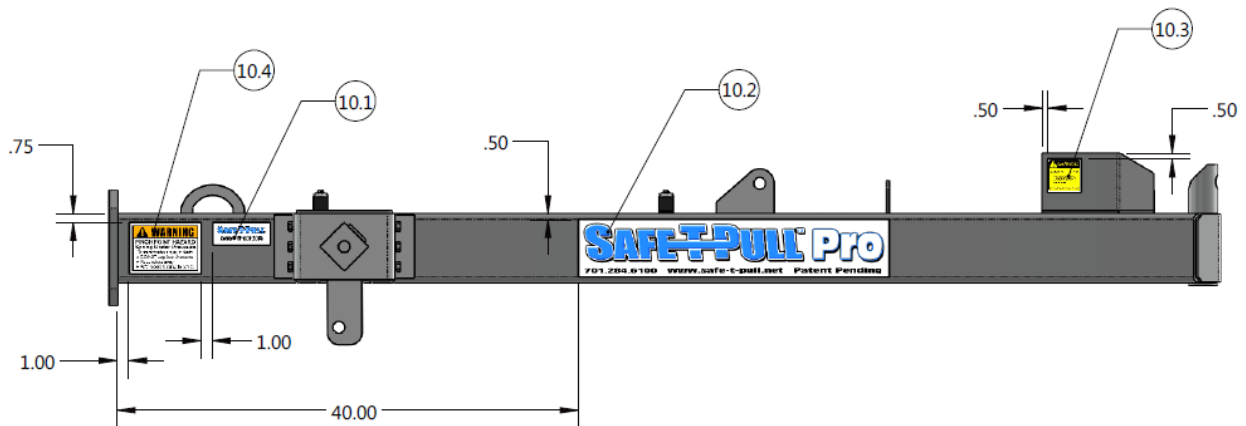
ITEM NO.	PART NUMBER	DESCRIPTION	QTY.
1	XP-114	STP COMMON PULLER, D20 SPRING (353)	1
2	FP-009	STP PRO PULLER, SPRING RETAINER SUB WELDMENT	1
3	FP-160	STP PRO PULLER, SPRING RETAINER PIN WASHER	1
4	FP-174	STP PRO PULLER, SPRING RETAINER WASHER	1
5	XP-014	HJNUT 2.000-12	2
6	FP-008	STP PRO PULLER, SPRING COVER SUB WELDMENT	1
7	XP-143	SHSC 0.375-16X.5X.5	1
8	XP-131	FW 0.3750	1
9	XP-221	HNUT 0.3750-16	1
10	XP-294	STP PRO PULLER, LABEL - SWIVEL SPRING	1
11	FP-135	STP PRO PULLER, CENTERING PIN	1
12	FP-126	STP PRO PULLER, DRAW BAR SHIM	4
13	FP-018	STP PRO PULLER, DRAW BAR SIDE PLATE WELDMENT	2
14	XP-192	NUT, 1-8, NYLOCK	3
15	XP-193	HBOLT 1.0000-8x9x2.5	3



**BOM # 3**  
SAFE-T-PULL PRO PULLER, SPRING TONGUE ASSEMBLY

ITEM NO.	PART NUMBER	DESCRIPTION	QTY.
1	FP-15025	STP PRO PULLER, PIVOT TONGUE WELDMENT	1
2	XP-114	STP COMMON PULLER, D20 SPRING (353)	1
3	CP-134	STP COMMON PULLER, SPRING STOP PLATE	2
4	CP-15132	STP COMMON PULLER, SPRING TONGUE CAP PLATE	1
5	FP-181	STP PRO PULLER, SPRING KEY (D20 - 353 SPRING)	1
6	CP-15180	STP COMMON PULLER, 353 SPRING BACK PLATE	1

**Warning! All stickers should be replaced if worn or unreadable!**



**BOM #4**  
SAFE-T-PULL PRO PULLER, STICKER KIT

ITEM NO.	PART NUMBER	DESCRIPTION	QTY.
10.1	XP-295	STP PRO PULLER, LABEL - SERIAL NUMBER	2
10.2	XP-296	STP PRO PULLER, LABEL - PRO LABEL	2
10.3	XP-290	STP COMMON PULLER, LABEL - MOVING HYD	2
10.4	XP-292	STP COMMON PULLER, LABEL - PINCH POINT / SPRING	2